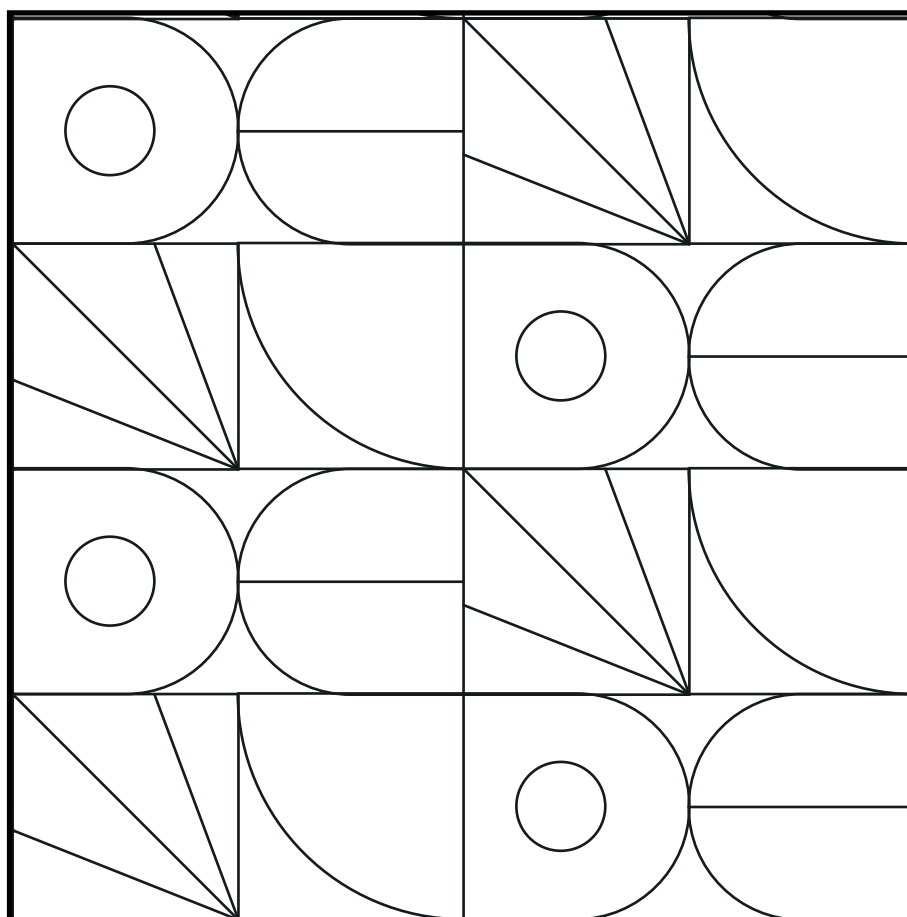


# Maths Colouring Problem



Can you fill the pattern that no two shapes connected by the same border have the same colour?

What is the smallest numbers of colour needed?



**HAVE A GO!**

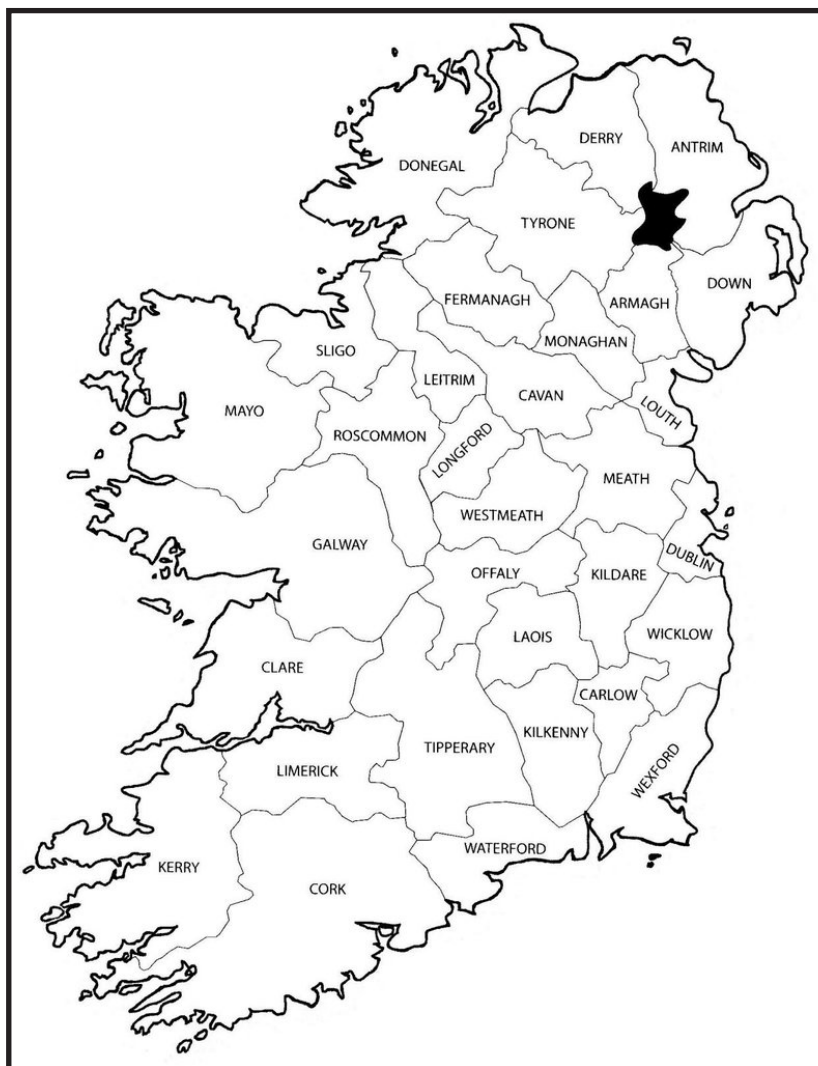
[www.mathsweek.ie](http://www.mathsweek.ie)

# Maths Colouring Problem



Can you fill the map that no two counties connected by the same border have the same colour?

What is the smallest numbers of colour needed?



## HAVE A GO!

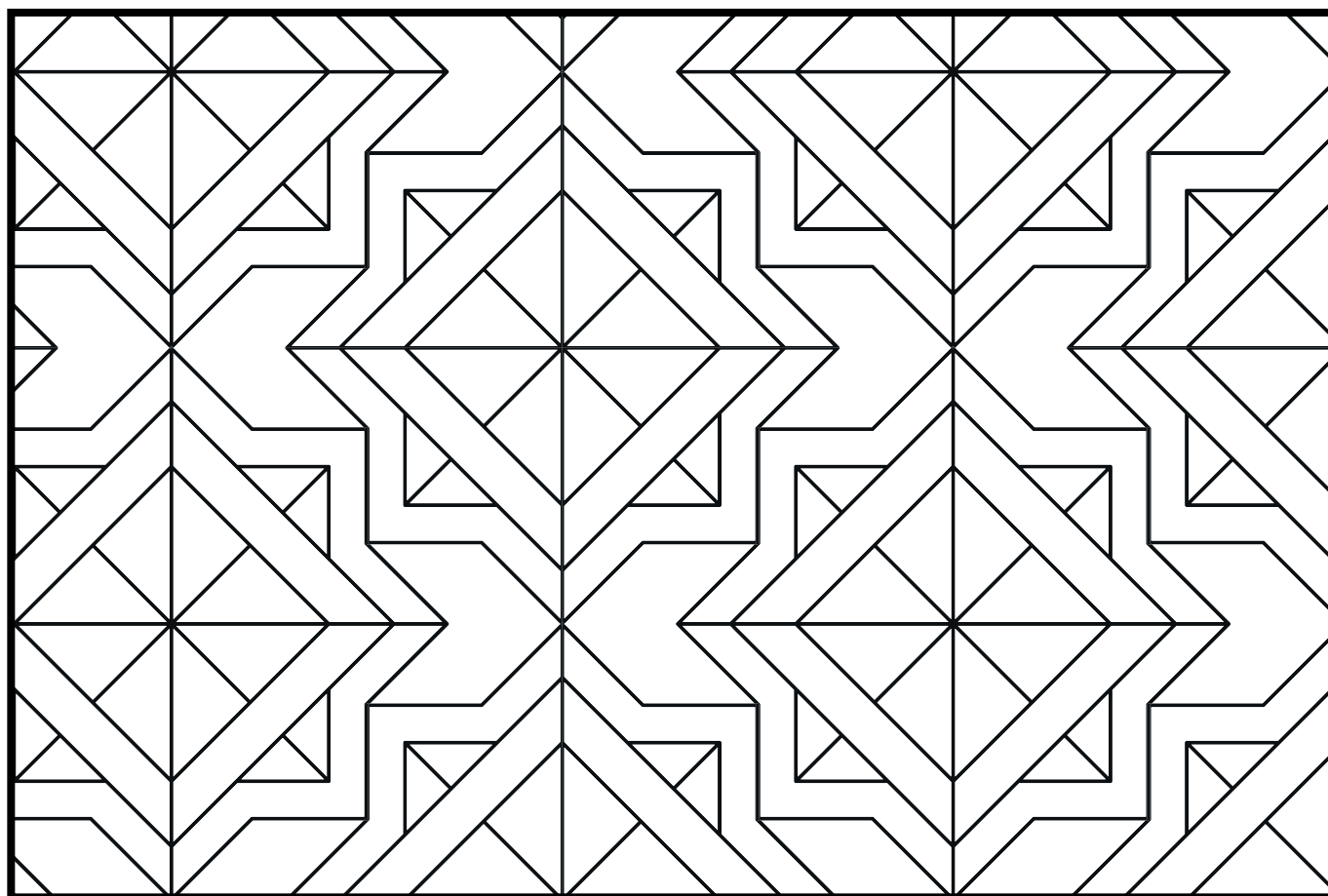
[www.mathsweek.ie](http://www.mathsweek.ie)

# Maths Colouring Problem



Can you fill the pattern that no two shapes connected by the same border have the same colour?

What is the smallest numbers of colour needed?



*HAVE A GO!*

[www.mathsweek.ie](http://www.mathsweek.ie)



An Roinn Oideachais agus Scileanna  
Department of Education and Skills

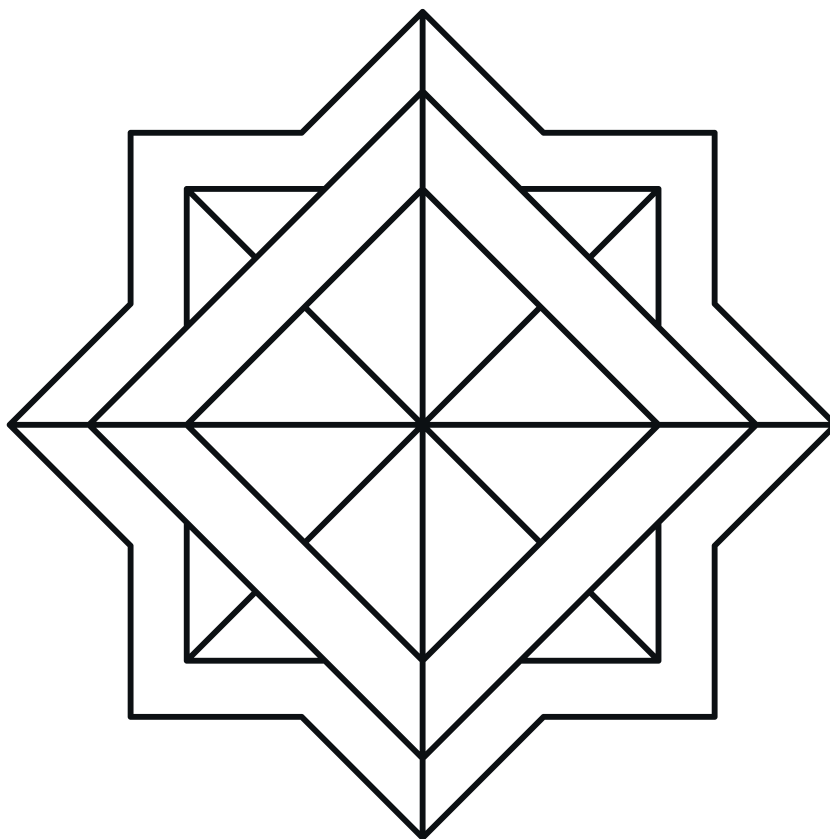


# Maths Colouring Problem



Can you fill the pattern that no two shapes connected by the same border have the same colour?

What is the smallest numbers of colour needed?



**HAVE A GO!**

[www.mathsweek.ie](http://www.mathsweek.ie)



An Roinn Oideachais agus Scileanna  
Department of Education and Skills

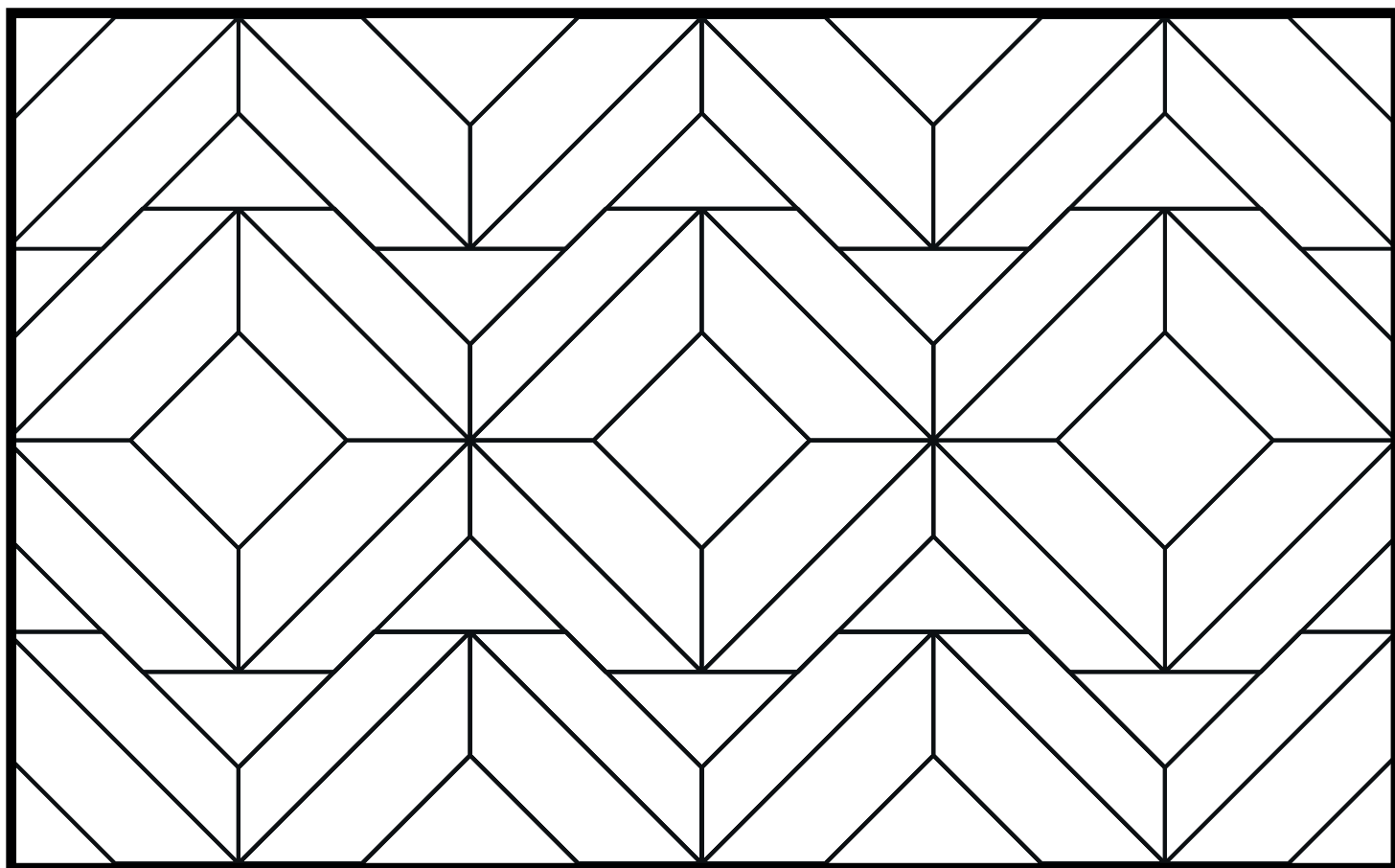


# Maths Colouring Problem



Can you fill the pattern that no two shapes connected by the same border have the same colour?

What is the smallest numbers of colour needed?



**HAVE A GO!**

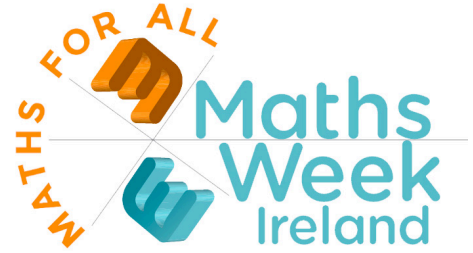
[www.mathsweek.ie](http://www.mathsweek.ie)



An Roinn Oideachais agus Scileanna  
Department of Education and Skills

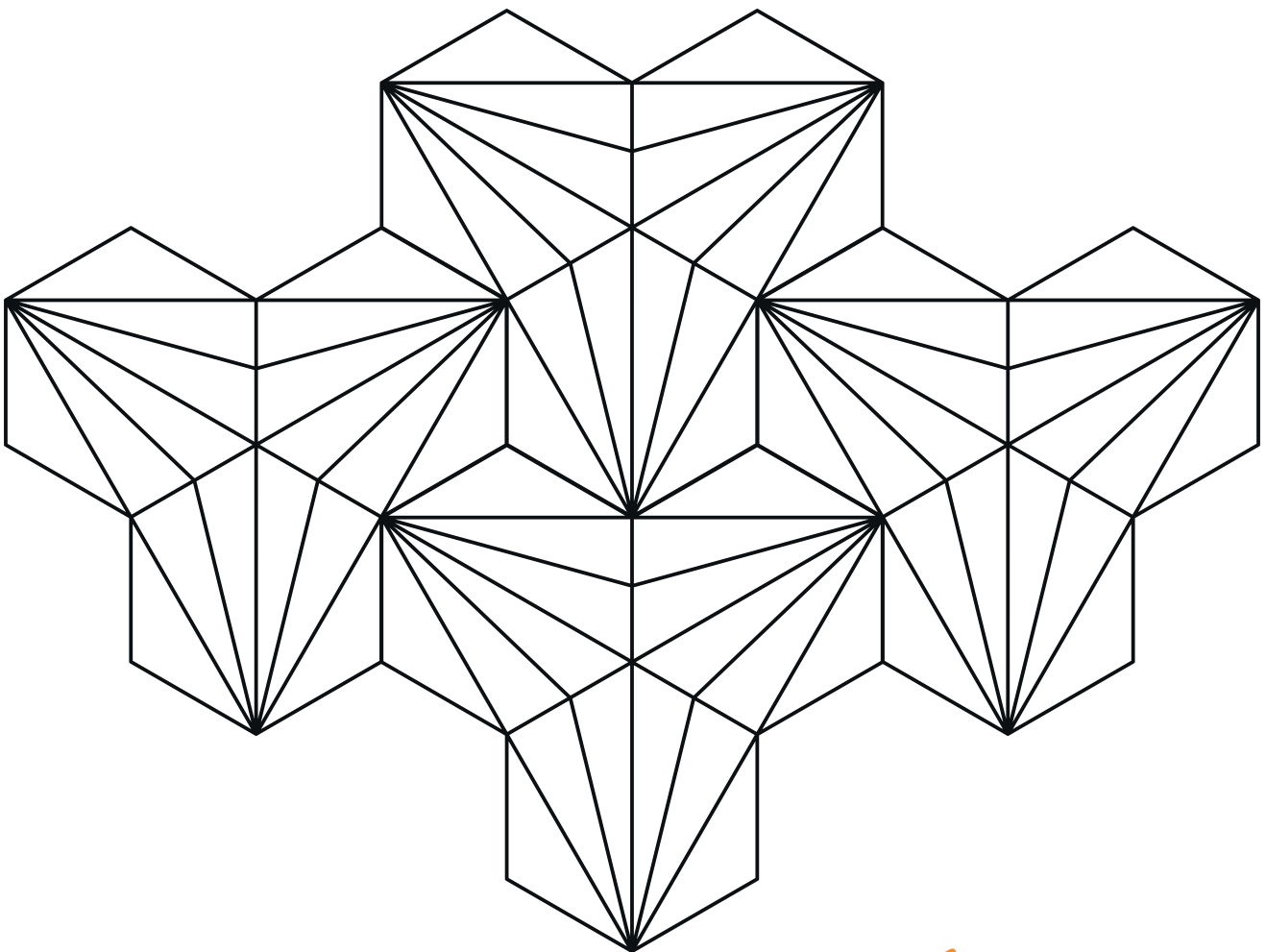


# Maths Colouring Problem



Can you fill the pattern that no two shapes connected by the same border have the same colour?

What is the smallest numbers of colour needed?



**HAVE A GO!**

[www.mathsweek.ie](http://www.mathsweek.ie)

# Maths Colouring Problem



Can you fill the pattern that no two shapes connected by the same border have the same colour?

What is the smallest numbers of colour needed?



**HAVE A GO!**

[www.mathsweek.ie](http://www.mathsweek.ie)



An Roinn Oideachais agus Scileanna  
Department of Education and Skills

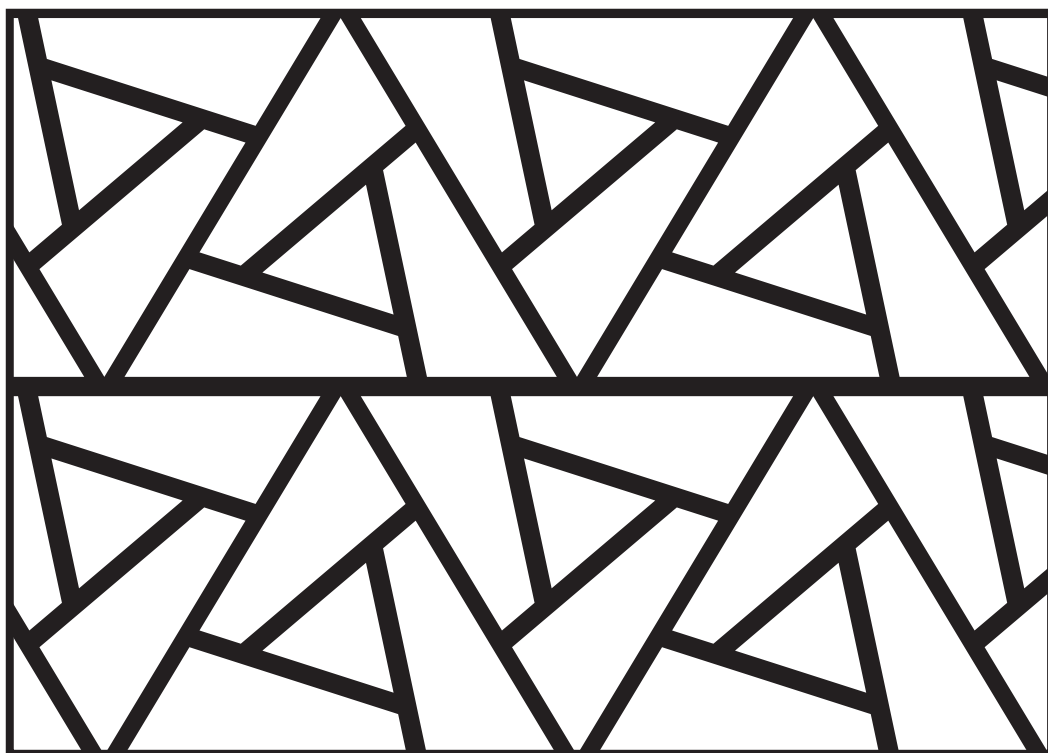


# Maths Colouring Problem



Can you fill the pattern that no two shapes connected by the same border have the same colour?

What is the smallest numbers of colour needed?



*HAVE A GO!*

[www.mathsweek.ie](http://www.mathsweek.ie)



An Roinn Oideachais agus Scileanna  
Department of Education and Skills

